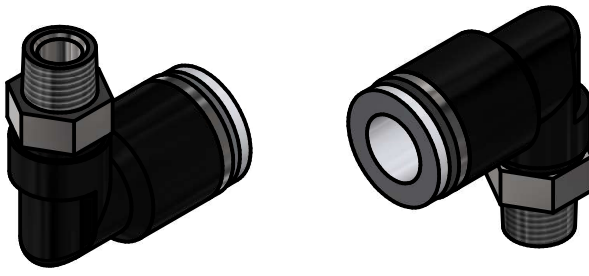
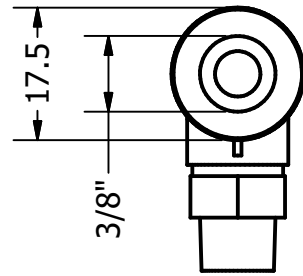
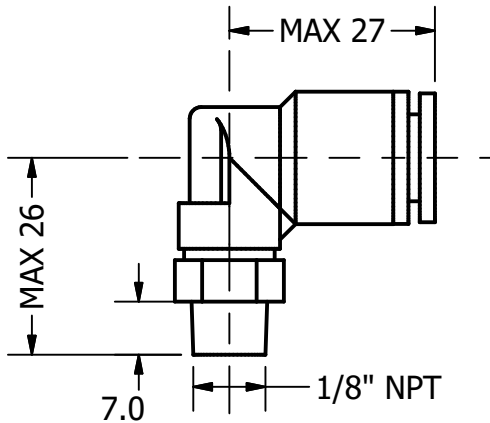
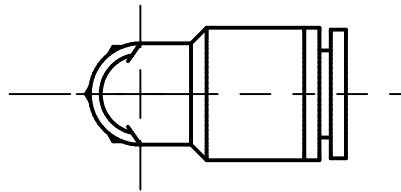


2



1



- NOTES:**
- Free of burrs and swarfs
  - No particles (greater than 0.2mm)
  - No Sharp Edges


B

B



A

A

PART NUMBER				DIMENSIONING AND TOLERANCING PER ASME Y14.5M-1994		ALL DIMENSIONS [mm.]		SCALE: 1 : 1		MAT: Nickel-Plated / Plastic	
901175											
				DEPT	DATE	NAME		 H.T.L perma USA, L.P. 2129 Center Park Road Charlotte, NC 28217 (704) 377-3100			
				A.E.	9.14.2018	K. Brooks					
				PROJECT				DESCRIPTION:		<div style="border: 1px solid black; padding: 5px; display: inline-block;"> <b>1</b> A         </div>	
				Accessories				Tube Connector Angle 90, 3/8" oD x 1/8" NPT-M			
STATUS	REVISION	DATE	NAME	PREV DWG NUM:				DWG NUM: AX_HTC_175			

2



1